



## Shield Radar Speed Display

Our Shield family of Radar Speed Displays is the ideal choice when portability is paramount. These incredibly compact, lightweight signs can be mounted virtually anywhere. At only 12 lbs., including mount, the Shield 12 is the most durable, portable sign on the market. You'll get better results because you'll use it more often.

### Product highlights

#### EXTREME PORTABILITY

Built for ease of use, it's the lightest, most portable sign available anywhere...and it still meets the MUTCD minimum 12" digit size.

#### SIMPLE, UNIVERSAL MOUNTING

In less than 30 seconds, one person can mount to U-channel, square channel, round poles, trailers, and hitch mounts using the integrated mounting system.

#### CLOUD-BASED MANAGEMENT

Easily manage your equipment and traffic safety program from anywhere, anytime with SmartApps (see reverse) or have us connect to your equipment in the field to assist with setup, training or troubleshooting.

#### INVALUABLE DATA MANAGEMENT AND ANALYSIS

Leverage our web-hosted database to store your traffic data at no charge. Focus your time & efforts on improving outcomes, not organizing files and maintaining software.

#### AMAZING BATTERY LIFE

Achieve up to several weeks of run time. A dedicated compartment allows all-weather battery replacement.

#### DURABLE CONSTRUCTION

The welded aluminum enclosure, concealed mounting hardware, shatterproof Lexan and graffiti-resistant powder-coat make it super tough.



### Product specs

#### Product Specs

##### Shield 12, 12s

Digit Size: 12" Digits (MUTCD min.)  
Dimension: 13.5" H x 15.5" W x 2.6" D  
Weight: 12 lbs (incl. mount)  
For speeds up to 25mph (Shield 12s)  
For speeds up to 45mph (Shield 12)

##### Shield 15

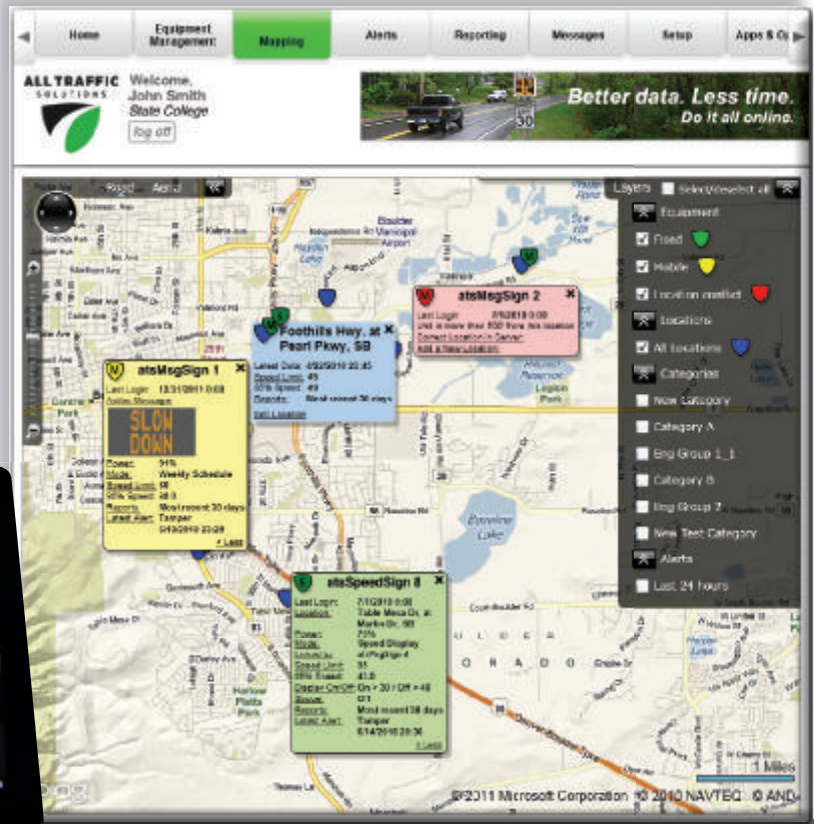
Digit Size: 15" Digits (3 metric digits)  
Dimension: 17" H x 24" W x 2.6" D  
Weight: 18 lbs (incl. mount)  
For speeds up to 55mph

#### Common Hardware Upgrades

Datalogging, Bluetooth, Violator Alert, Pictures, Linking, Metric

## SmartApps™

While our best-in-class hardware will help improve your traffic flows, complimenting this equipment with our patent-pending SmartApps helps improve your workflows. Leveraging a consistent interface across our entire product line, SmartApps provide a new level of awareness while reducing the amount of time needed to manage your equipment and information. In a world of increasing expectations and decreasing resources, SmartApps help you achieve better outcomes in less time.



## SmartApps: Traffic Suite

All the SmartApps you need for effective and efficient traffic program management. SmartApps can also be purchased individually.

### MAPPING

Manage your entire program through an intuitive visual interface.

- Interactive map provides a window to all system information and functions
- Select "layers" of info important to you
- Identify where equipment is, or isn't

### REPORTING

Save time collecting, organizing, compiling and distributing information.

- Automated, daily uploads of new data into a centralized, SAS70-certified environment
- Identify trends to allocate resources and be proactive

### EQUIPMENT MANAGEMENT

Stop wasting time driving to equipment to update and monitor it.

- Check status and change settings from any Internet-connected computer
- Respond immediately to changing situations
- GPS monitors planned and unplanned moves

### IMAGE MANAGEMENT

Achieve greater awareness, including alarms or request generated images.

- Capture images based on speeds, tampering, time intervals or upon request
- Supplement alerts with visual details
- Review, edit and act on useful images

### ALERTS

Specify when and whom you'd like notified upon occurrence of certain conditions.

- Receive email or text as events happen
- Be aware of low batteries, high speeds, tampering, congestion and more
- Vary recipients by equipment location

### PREMIERCARE

Get a perpetual warranty, damage insurance and remote diagnostics.

- Perpetual warranty for duration of subscription
- 50% discount on repairs and parts
- Real-time remote diagnostic monitoring
- Automatic firmware updates



## Before You Buy, Consider...

- **Convenience:** Our compact, lightweight signs get used more so they have a bigger impact.
- **Legibility:** Digit height, radar pickup range and vehicle speeds all affect the drivers' ability to read and react. We offer models to address all situations and budgets.
- **Adaptability:** Our signs can be upgraded at any time to accommodate your changing needs.
- **Compliance:** The only colored LEDs on public roads should be amber. Our models reflect federal MUTCD rules.
- **Overall Cost:** With SmartApps PremierCare, your equipment has a perpetual warranty.
- **Product Support.** Our product support specialists can remotely connect to any sign and help.

866-366-6602 • [alltrafficsolutions.com](http://alltrafficsolutions.com)

3100 Research Drive, State College, PA 16805-0085 • fax: 814-237-9006



A sign of the future.™